



Maximum Entropy Niche-Based Modeling (Maxent) of Potential Geographical Distributions of *Lobesia Botrana* (Lepidoptera: Tortricidae) in China

Wencheng Lv, Zhihong Li, Xingxia Wu, Wenlong Ni, Weiwei Qv

► To cite this version:

Wencheng Lv, Zhihong Li, Xingxia Wu, Wenlong Ni, Weiwei Qv. Maximum Entropy Niche-Based Modeling (Maxent) of Potential Geographical Distributions of *Lobesia Botrana* (Lepidoptera: Tortricidae) in China. 5th Computer and Computing Technologies in Agriculture (CCTA), Oct 2011, Beijing, China. pp.239-246, 10.1007/978-3-642-27275-2_26 . hal-01361144

HAL Id: hal-01361144

<https://inria.hal.science/hal-01361144>

Submitted on 6 Sep 2016

HAL is a multi-disciplinary open access archive for the deposit and dissemination of scientific research documents, whether they are published or not. The documents may come from teaching and research institutions in France or abroad, or from public or private research centers.

L'archive ouverte pluridisciplinaire **HAL**, est destinée au dépôt et à la diffusion de documents scientifiques de niveau recherche, publiés ou non, émanant des établissements d'enseignement et de recherche français ou étrangers, des laboratoires publics ou privés.



Distributed under a Creative Commons Attribution 4.0 International License

Maximum entropy niche-based modeling (Maxent) of potential geographical distributions of *Lobesia botrana* (Lepidoptera: Tortricidae) in China

Wencheng Lv¹, Zhihong Li^{1*}, Xingxia Wu², Wenlong Ni¹, Weiwei Qv¹

¹ College of Agronomy and Biotechnology, China Agricultural University, Beijing, P. R. China

² Administration of Quality Supervision, Inspection and Quarantine, Beijing, P. R. China

* Corresponding author (Tel: +86-10-62731299; Fax: +86-10-62733404; Email: lizh@cau.edu.cn)

Abstract. *Lobesia botrana* (Denis & Schiffermüller, 1775) (Lepidoptera: Tortricidae) is one of the most destructive pests of grape in the Palearctic region. The potential geographical distribution of this pest is important to agriculture security. In this study, Maxent and ArcGIS were used to project the potential geographical distribution of *L. botrana* in China under the current climate. The result indicated that *L. botrana* was suitable in most parts of middle and southern China and the Maxent model was highly accurate for the AUC value of 0.970. Jackknife analysis revealed that low temperature influence the potential distribution of *L. botrana*. This study would be a decision-support of surveillance and quarantine measures.

Keywords: *Lobesia botrana*, potential geographical distribution, Maxent, ArcGIS

Introduction

The grape berry moth, *Lobesia botrana* (Lepidoptera: Tortricidae) is an important pest of vineyards in many countries of the world [1,2]. It was first described in 1775 in Vienna, from samples collected in Italy. At present, it has spread to several European countries, North and West Africa and the Middle East. It was introduced into Japan before 1974 and recently into Chile [2]. In September 2009, it was reported for the first time from Napa County, CA in North America [3]. It is considered an economic pest of grape because the damage to the grape yield is twofold, direct damage by larvae feeding on all parts of the flower cluster in early spring, on green berries in mid summer, and on ripening fruit in late summer continuing through harvest, and indirect damage by fungi and bacterial growth [4]. In response to differences of climate, the number of generations completed by *L. botrana* within a year differs geographically. In general, two generations occur annually in northern areas of Europe, such as Austria, Germany, Switzerland and northern France, whereas three generations occur in southern Europe, including Mediterranean countries [5,6]. High temperature and low humidity provide optimal conditions for *L. botrana*, while rainy in conjunction with low temperature conditions seem to reduce the frequency of mating and, subsequently, egg production [7]. Optimal conditions for its activity occur at temperatures over 20°C and at 40%-70% relative humidity [8]. The Chinese government classified *L. brotrana* as one of the quarantine pests [9,10]. Although to date there is no distribution of *L. brotrana* is unknown in China, the potential risk of it spreading from its original introduction [2] or being repeatedly introduced into China is increasing as the international grape trade increases. It is important

to predict the potential geographical distribution of *L. botrana* in China, which will present a decision-support of surveillance and quarantine measures.

There are several methods to predict the potential geographical distribution of organisms. The most commonly used methods are ecological niche model such as CLIMEX, GARP and Maxent[11]. Maxent is a machine learning method, which estimates the distribution of a species by finding the probability dispersal of maximum entropy, subject to constraints representing incomplete information about the distribution. The constraints are the expected value of each environmental variable that should match its average over sampling locations derived from environmental layers. The algorithm evaluates the suitability of each grid cell as a function of environmental variables of that cell [12]. Maxent has been extensively used though it was just recently released [13-19]. In this study, Maxent software is used to predict the potential geographical distribution of *L. botrana* in China.

1. Material and Method

1.1 Material

1.1.1 Occurrence Data of *L. botrana*

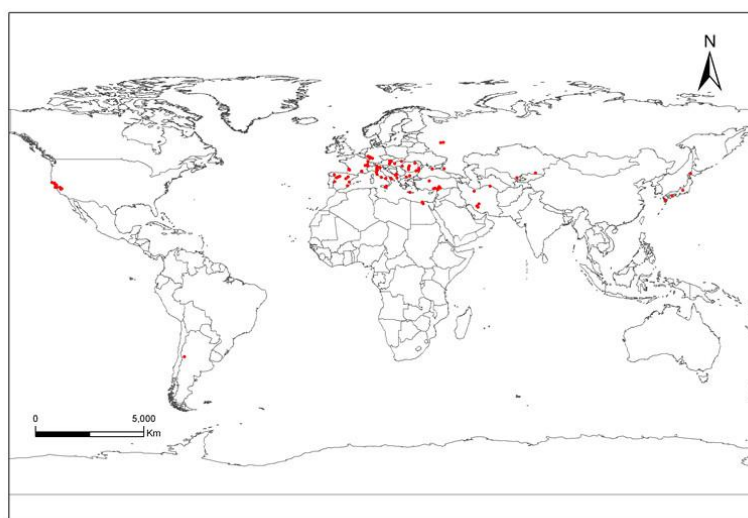


Fig. 1. The known distributions of *Lobesia botrana* in the world

The species distributional data are gathered from literature published, the specimen records in the museum or herbarium, and authoritative electronic resources. In addition, the data are also obtained through on-the-spot investigation [20]. In this study, the data came from the distribution of papers published abroad [21-30]. Localities were geo-referenced based either on coordinates provided directly in papers or on the official gazetteers (GeoNet, <http://gnswww.nga.mil/geonames/GNS/index.jsp>). The 95 unique records in Fig. 1 were obtained after checking the location. According to Maxent software requirements, the reference points were saved in csv format by species name, longitude, and latitude in

order.

1.1.2 Software Tools

Maxent: Downloaded from <http://www.cs.princeton.edu/~schapire/maxent/>, ver. 3.3.3e.

ArcGIS: Purchased by the Plant Quarantine and Invasion Biology Laboratory of China Agricultural University (CAUPQL), ver. 9.3.

1.1.3 Environmental Variables

Nine biological climate variables (Table 1) were used as the main environmental data for prediction. The climate data with a resolution of 5 arc-minutes in 1950-2000 were downloaded from <http://www.diva-gis.org/climate.htm>, and converted to asc format according to Maxent software requirements.

Table 1. Environmental variables used in potential distribution prediction of *L. botrana*

Environmental variables	
BIO6	Min temperature of coldest month
BIO19	Precipitation of coldest quarter
BIO11	Mean temperature of coldest quarter
BIO18	Precipitation of warmest quarter
BIO8	Mean temperature of warmest quarter
BIO2	Mean diurnal range
BIO4	Temperature seasonality
BIO3	Isotherm
BIO1	Annual mean temperature

1.1.4 Basic Geographic Data

The 1:400 million maps of national boundaries and province boundaries used in this paper were downloaded from the national fundamental geographic information system (<http://nfgis.nsdi.gov.cn/>).

1.2 Methods

The distributional and environmental data were imported into the Maxent, and 75% of the distribution points were selected at random as the training dataset, the remaining points as the test dataset. Other parameters were the software defaults. The analysis resulted in the logistic format were outputted by ASCII type of file. The file was imported into ArcGIS and showed the results map. ArcGIS was also used to show the known distributions of *L. botrana* in the world.

The predicted results were usually classified based on the suitable values. The area under the curve (AUC) were directly calculated by Maxent. In addition, Maxent has a jackknife option through which

the importance of individual environmental variables can be estimated (Fig. 4).

2. Results and Analysis

We graphed the potential geographical distribution of *L. botrana* in China under current climate conditions (Fig. 2). In the predicted results, the appropriate values of known regions of occurrence were more than 0.006; the values of Hokkaido in Japan were 0.107, It was reported that this pest had occurred in this region [31]; the values of the regions all had severe occurrences were more than 0.17. Therefore, the suitable area was divided into 4 grades.

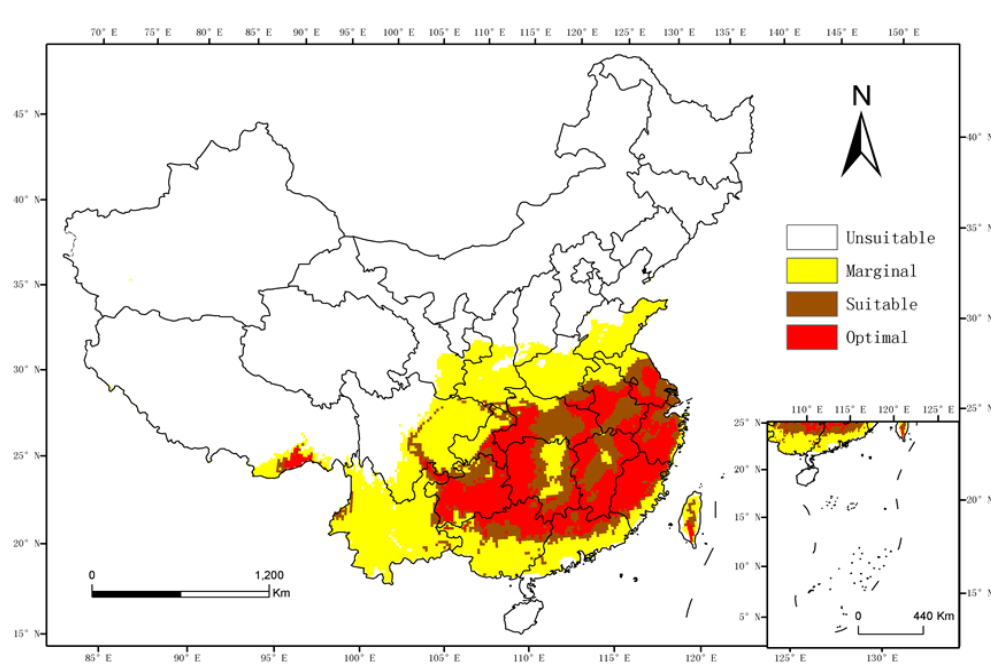


Fig. 2. The potential geographical distribution of *Lobesia botrana* in China under current climate conditions, as modeled using Maxent. White = unsuitable (Appropriate value ≤ 0.006); yellow = marginal ($0.006 < \text{Appropriate value} \leq 0.1$); brown = suitable ($0.1 < \text{Appropriate value} \leq 0.17$) and red = optimal ($0.17 < \text{Appropriate value} \leq 1$).

Optimal regions: middle and southern Jiangsu, Zhejiang and Anhui; eastern and western Hubei; Jiangxi except northern region; northern Guangdong and Guangxi; eastern and southern Guizhou; western Hunan; southeastern Chongqing and Tibet; southern Henan and Taiwan.

Suitable regions: Southeastern and western Jiangsu; Northern Zhejiang and Guizhou; Mid south parts of Anhui and Hubei; Eastern and middle Hunan; Middle Taiwan, Guangdong and Guangxi; Eastern and western Yunnan; a small portion of Sichuan; Shanghai.

Marginal regions: Northern Jiangsu, Anhui and Hubei; Southern Shaanxi, Shanxi, Fujian, Guangdong and Guangxi; Eastern Gansu; Middle Hunan and Henan; eastern and western Yunnan and Sichuan; Northwestern Chongqing; Southeastern Tibet; Shandong except northern regions; most parts of Taiwan. Maxent is a new software, which predicts the geographical distribution of species, AUC values are regularly used to evaluate the ability of the models to predict independent test points accurately. AUC

values of 0.5–0.7 are usually taken to indicate low accuracy. Values of 0.7–0.9 indicate useful applications, and values > 0.9 indicate high accuracy [32]. The AUC value reached 0.970 in this study (Fig. 3), indicating that the Maxent model performed well and that its predictions of the potential distribution of *L. botrana* were highly accurate.

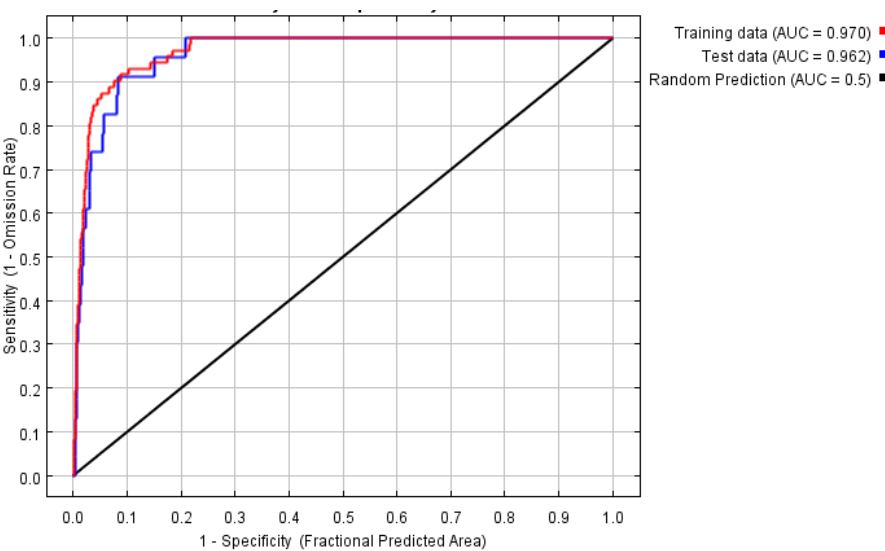


Fig. 3. Sensitivity vs. 1-Specificity for *Lobesia botrana*

3. Discussion

In order to make more accurate predictions using the Maxent model, we required a certain amount of accurate and representative geographical distribution of species known point data, but also needed to select the key environmental variables to establish a relatively accurate model. The foundation depends on having a good knowledge of the biological and ecological characteristics of species [33].

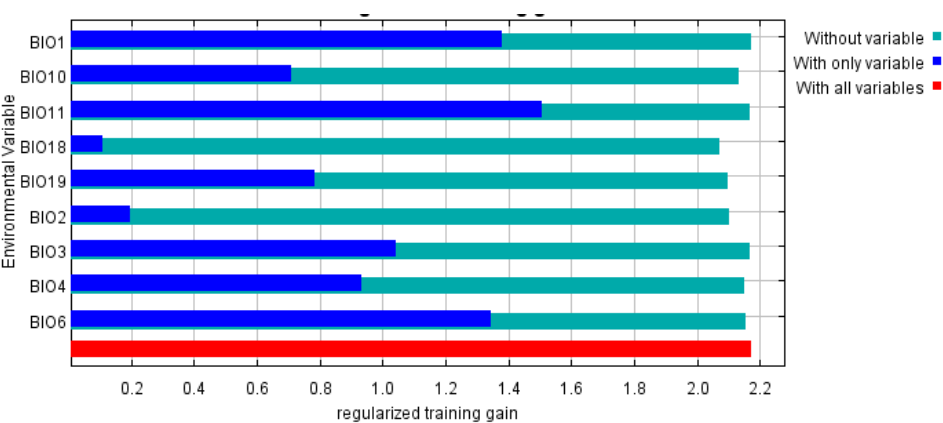


Fig.4. Jackknife test for environmental variable significance performed by Maxent

From Fig. 4, the environmental variable with the highest value is the mean temperature of coldest quarter, which contains the most valuable information. The Maxent background showed the min

temperature of coldest month had some information which other variables did not have. This meant low temperatures had a great influence on the occurrence of this pest, which was consistent with previous studies, and also indicated that the study selected the correct environmental variables. The main host of *L. botrana* is grape which grows in most part of our country, so *L. botrana* is easy to establish itself once introduced into China. Therefore, the following management measures should be strengthened: (i) Fruit or planting material from areas where the pest has occurred should require a licensing system and strictly quarantined to prevent future spread of this pest; (ii) the regions predicted to be suitable for *L. botrana* should be monitored more rigorously to strengthen quarantine; (iii) long-term monitoring system should be established and the monitoring results should be reported regularly.

The process of invasive species entering and establishing in a new region is complex. In this study, we just considered the altitude and climate factors in environmental variables. Soil type, vegetation and climate warming on the distribution of this pest have not been considered for lack of corresponding digital base map. More research on the influence of environmental variables on survival of *L. botrana* are needed.

Acknowledgments

The authors thank Prof. Stauffer at Pennsylvania State University for his valuable suggestions and modifying the draft. We thank all members of the Plant Quarantine and Invasion Biology Laboratory of China Agricultural University (CAUPQL). This study received financial support from the 973 project (2009CB119200).

References

1. Avidov, Z., Harpaz, I.: Family Tortricidae: Leaf roller moths. In : Plant Pests of Israel, pp. 380-384. Israel Universities Press, Jerusalem (1969)
2. CIE. *Lobesia botrana* (Schiff.). Distribution Maps of Pests, Series A, Map No. 70(revised). Commonwealth Institute of Entomology/Commonwealth Agricultural Bureau, Wallingford, UK (1974)
3. Monica, L., Lucia, G., Rhonda, J.: European Grapevine Moth: a New Pest of Grapes in California Farm advisors 20-28 (2010)
4. Louis, F., Schirra, K.: Mating disruption of *Lobesia botrana* (Lepidoptera: Tortricidae) in vineyards with very high population densities. IOBC/WPRS Bull 24:75-79 (2001)
5. Badenhauer, I., Lecharpentier, P., Delbac, L.: Contributions of Monte-Carlo test procedures for the study of the spatial distribution of the European vine moth, *Lobesia botrana* (Lepidoptera, Tortricidae) in European vineyards. Eur. J. Entomol 96: 375-380 (1999)
6. Venette, R.C., Davis, E.E., Dacosta, M., Heisler, H.: Mini Risk Assessment, Grape Berry Moth *Lobesia botrana* (Denis & Schiffermuller) [Lepidoptera: Tortricidae]. USDA-APHIS, Center for Plant Health Science and Technology (Internal Report), Raleigh, NC, 38 pp (2003)
7. Deseo, K.V., Marani, F., Brunelli, A., Bertaccini, A.: Observations on the biology and diseases of *Lobesia botrana* Den. and Schiff. (Lepidoptera: Tortricidae) in central-north Italy. Acta Phytopathologica Academiae

Scientiarum Hungaricae 16: 405-431 (1981)

8. Roditakis, N., Karandinos, M.: Effects of photoperiod and temperature on pupal diapause induction of grape berry moth *Lobesia botrana*. *Physiological Entomology* 26: 329-340 (2001)
9. AQSIQ. Plant inspection and quarantine. In: AQSIQ ed. *Manual of Inspection and Quarantine*. AQSIQ, Beijing. 80 – 81 (2005)
10. CABI. *Crop Protection Compendium*. CAB International Wallingford (2005)
11. Wang, Y.S., Xie, B.Y., Wan, F.H.: Application of ROC curve analysis in evaluating the performance of alien species' potential distribution models. *Biodiversity Science* 15(4): 365-372 (2007)
12. Phillips, S.J., Anderson, R.P., Schapire, R.E.: Maximum entropy modeling of species geographic distributions. *Ecological Modeling* 190: 231-259 (2006)
13. Elith, J., Graham, C.H., Anderson, P.R.: Novel methods improve prediction of species' distributions from occurrence data. *Ecography* 29 (2): 129-151 (2006)
14. Perkins, S.L., Rothschild, A., Waltari, E.: Infections of the malaria parasite, *Plasmodium floridense*, in the invasive lizard, *Anolis sagrei*, in Florida. *Journal of Herpetology* 41(4): 750-754 (2007)
15. Wang, Y.S., Xie, B.Y., Wan, F.H.: Potential Geographic Distribution of *Radopholus similis* in China. *Chinese Agriculture Science* 40(11): 2502-2506 (2007).
16. Bigg, G.R., Cunningham, C.W., Ottersen, G.: Ice-age survival of Atlantic cod: agreement between palaeoecology models and genetics. *Biological Sciences* 275: 163-172 (2008)
17. Loiselle, B.A., Jorgensen, P.M., Consiglio, T.: Predicting species distributions from herbarium collections: does climate bias in collection sampling influence model outcomes. *Journal of Biogeography* 35(1): 105-116 (2008)
18. Zhao, W.J., Chen, L., Ding, K.J.: Prediction of potential geographic distribution areas of the maize downy mildew in China using MAXENT. *Plant Protection* 35(2):32-38 (2009)
19. Feng, Y.M., Liang, J., Lv, Q.: Potential Suitability Analysis of *Hemiberlesia pitysophila* Takagi in China. *Forest Research* 22(4): 563-567 (2009)
20. Zeng, H., Huang, G.S., Lin, W.: Prediction of potential geographic distribution of *Microcyclus ulei* in the world using MaxEnt. *Plant Protection* 34(3): 88-92 (2008)
21. Sharon, R., Zahavi, T., Soroker, V.: The effect of grape vine cultivars on *Lobesia botrana* (Lepidoptera: Tortricidae) population levels. *J Pest Sci* 82:187–193 (2009)
22. Eghtedar, E.: Biology of *Lobesia botrana* in Fars province. *Applied Entomology and Phytopathology* 63(1/2):5-6 (1996)
23. Castañeda-Samayoa, O., Holst, H., Ohnesorge, B.: Evaluation of some Trichogramma species with respect to biological control of *Eupoecilia ambiguella* Hb. and *Lobesia botrana* Schiff.. *Zeitschrift für Pflanzenkrankheiten und Pflanzenschutz* 100(6):599-610 (1993)
24. Burov, V.N., Sazonov, A.P.: A new preparation for orchards and vineyards. *Zashchita Rastenii* (Moskva) 10:50-51 (1992)
25. Baumgartner, J., Baronio, P.: Phenological model of the flight of *Lobesia botrana* Den. & Schiff. (Lep. Tortricidae) in relation to the environmental conditions of Emilia-Romagna. *Bollettino dell'Istituto di Entomologia "Guido Grandi" della Università degli Studi di Bologna* 43:157-170 (1989)
26. Fischer-Colbrie, P.: Present pests in viticulture and modern methods of control. *Pflanzenarzt* 33(4):35-37 (1980)
27. Pavan, F., Sbrissa, F.: Damage of the grape berry moths, *Lobesia botrana* (Den. e Schiff.) and *Eupoecilia ambiguella* (Hb.), on late-harvested cultivars in north-eastern Italy. *Frustula Entomologica* 17:43-53(1994)
28. Pongracz, A.: Swarming dynamics of *Lobesia botrana* Schiff. in the Sopron wine-growing region.

Novenyvedelem 18(1):27-28 (1982)

29. Russo, A., Gurrieri, C., Bonfanti, S., Fici, P.: Flight dynamics of the grape berry moth in the vineyards of eastern Sicily. *Rivista di Viticoltura e di Enologia* 38(4):219-22 (1985)
30. Schieder, F.: Investigations on the swarming dynamics of grape berry moths in Fejer County, Eastern Transdanubia. *Novenyvedelem*, 20(7):320-32 (1984)
31. Crop Protection Compendium, <http://www.cabi.org/cpc/>
32. Swets, J.A.: Measuring the accuracy of diagnostic systems. *Science* 240: 1285–1293 (1988)
33. Chang, Z.L., Zhou, Y.L., Zhao, Z.T.: Suitability analysis of *Karnal bunt* in China based on MaxEnt model. *Plant Protection* 36(3):110-112 (2010)